



Calgary Chapter
Federation Of Canadian Artists

FCA NEWSLETTER

WWW.FCACALGARY.CA

MARCH 2009

CALGARY CHAPTER

UPCOMING EVENTS

ABSOLUTELY ART
May 2
10am—4pm
Haysboro Community
Center

JOURNEY IN ART
July 2009
The Station Cultural
Center

MAD ABOUT ART
November 7
10am—4pm
Haysboro Community
Center

Painting is one thing
but art is another.
You can teach an
elephant to paint,
but you can't teach
it to be an artist

~Warren Criswell~

Inside this issue:

President's Message	2
Meeting Program	2
Annual General Meeting 2	
Meeting Minutes	3
Member News and Oppor-	
unities.....	4
Workshops.....	4

How to Critique - Kathryn Manry

This article further develops our look at the elements and principles of design, how to use them and how to analyze them in works of art. This is the foundation on which critiques are built and this month we look at the nuts and bolts of giving a critique.

This can be an intimidating process, for both the painter and the viewer. The word itself is problematic – with all the associations with “critical” in an unconstructive context. But critiquing is meant to be constructive and helpful. It helps to remember that we are doing critiques as a way to support each other in our progress and to remember that you are offering your opinion and ideas only – the artist is free to ignore them if they don't work for them. Try to take the pressure off the process...

A nice framework for critiquing is to offer “a plus and two wishes”. Start with a positive observation (the plus) on what seems to work or what you like about the painting. Then you can offer a couple of comments on what you think may be weak spots or difficulties. By describing them with sentences like “I wish the painting had a greater range of value” or “I wish you had tried to simplify the forms of the trees in the background more” or stating it in a similar manner, you can tactfully soften what may seem like a harsh judgment through careful phrasing.

Try to start with the bigger, more general comments (like overall composition issues) and then move to the more specific. Commenting on two or three ideas is probably enough – you don't need to nit-pick down to the fine detail.

Try not to be vague – specific comments using precise vocabulary are much more helpful. This is the difference between “The light doesn't work” and “The way you have described the light source is not consistent in all parts of the painting, such as where it falls on the vase from the right, but on the fruit from behind”

Be careful with using humour when communicating electronically – it may sound friendly and casual, but it is very easy to not “get it” on the receiving end. And try to end on a positive note.

As a final thought - a few suggestions on making use of the critiquing process: If you are the person requesting feedback on a painting, it is very helpful to accompany it with a few comments on what your intent is with the piece. Questions or observations on areas of concern or aspects you are struggling with can make the it much easier for people to respond, and can give you more helpful feedback.

If you are the person who is doing the critique, don't hesitate to ask questions to get greater clarity on what the artist wants for feedback, what they are trying to achieve, or technical issues such as media.

If you find you are getting stuck or wondering how to approach responding, keep referring back to what you think the artist's intentions are in the painting.

Critiquing is a great learning opportunity, from both sides of the painting, and it gets easier with practice as skill in looking and formulating responses develops. As artists, we don't get many opportunities for useful feedback on our work, and helping each other out through mutual critiques can be a great tool for growth.

President's Message - Rex Beanland

First of all I would like to mention that this will be my last year as president. I will be talking about this at a later date but at this point I will just mention that we will be looking for someone to take on this position at the April meeting.

I can say, absolutely, without hesitation, that for me it was one of the best things I've ever done even though I took it on with much hesitation and nervousness. I would encourage all members to seriously consider if you might be ready to try something like this.

I'm so pleased with the way our Chapter is moving at present and working with the executive we have has been so fulfilling that I can whole heartedly recommend the experience to anyone. Everything is in place for a smooth transition.

March 17 Program - Demo with Doug Swinton

Doug Swinton is one of Canada's premiere outdoor painters.

Born and raised in Calgary, Doug depicts the foothills and mountains of the Canadian Rockies, where he currently resides with his wife Donna and their two boys.

His willingness to share this knowledge with students has earned him a reputation as an outstanding instructor. He



paints the Alberta landscape with powerful movement, light and bold colour. A very loose and bright figure Painter; Doug will be demonstrating a figurative painting on March 17th.

Doug owns and operates Swinton's Art Supply & Instruction and teaches many classes in house.

Annual General Meeting Notice—April 21, 2009

If you are interested in If you are nominating someone Membership lists, Chapter By-volunteering for a position or please make sure they are willing laws and the Financial Report will would like to nominate someone to let their name stand for a be available at the Annual for one of the executive positions, position. We have lots of General Meeting. please give anyone on the opportunities for members and executive a call to find out more you'll enjoy meeting and making or to indicate your interest. friends.

FCA Executive - 2008/2009

Position	Name	Phone	E-Mail Address
President	Rex Beanland	(403) 685-5812	beanland@telus.net
1 st Vice President	Rosemary Bennett	(403) 249-4814	rosemarybennett@shaw.ca
2 nd Vice President	Colleen O'Brien	(403) 208-4478	colleenobrien1@mac.com
Secretary	Kathryn Manry	(403) 247-9870	kmanry@shaw.ca
Treasurer	Lyse Deselliers	(403) 295-3584	landr@telusplanet.net
Past President	Lorna Hannett	(250) 692-7969	lorna12@xplornet.com

Easel Rentals

F.C.A. has 54 easels for rent:

1-16 easels: \$5.00 each per day
 17-25 easels: \$80.00 per day
 26 - 54 easels: \$100.00 per day
 (Pick-up one day drop off the next)
 \$50.00 damage deposit please
 Phone the easel lady:
 Velma Bissoondath 532-0690
 velbissoondath@hotmail.com

Chapter Meeting Minutes - February 17, 2009

Attendees: 32

Motion by Lillian Tkach-Matisons to approve the January 20, 2009 general meeting minutes. Seconded by Leslie Scherger. Passed

Item 1 – Changes to Chapter Policy Manual

The policy manual has been updated. While there are several minor updates the major change revolves around the number of paintings a member may submit to a jury and the associated jury fee. This is the only change that will be discussed tonight, the other changes will be voted on at the March general meeting.

The policy manual has been updated to increase the number of paintings a member may submit to a juried show from the present 3 (three) to a maximum of 5 (five). The jury fee would also increase to \$5.00 for each painting submitted. All 5 can be accepted.

Question raised by Linda Plishka as to why the jury fee is increasing and if it could be voted on separately.

Answer: The fee increase is due in part to the increased volumes and the increase juror honorarium that may be incurred. It was also noted that other associations charge higher fees (National charges \$11.00 per image) and that we had not increased our jury fee in many years. Because the increase in fees is tied to the increase in number of paintings, it needs to be voted on in one motion.

A motion was made by Rex Beanland to increase the number of paintings a member may submit to a juried show to 5

(five). The jury fee will increase accordingly to \$5.00 per piece submitted. **Vote: Unanimously passed.**

Item 2 – 2009 Shows

The following shows have been confirmed for 2009. All shows will be qualifying shows.

May 2 – Absolutely Art – Haysboro Community Center. Jury night – April meeting

July 2–30 - Journey in Art – The Stations in Okotoks. Jury night – May meeting

November 7 – Mad About Art – Haysboro Community Center – Jury night to be announced

Item 3 – Sharon Williams Workshop

Dawn Heinemeyer indicated that to date only 4 people have signed up. Need a minimum of 7 to go ahead. Members were asked to speak with Dawn tonight if they were interested in signing up.

Item 4 – Treasurer's Report

Lyse Deselliers has looked into renting an electronic credit card machine for our shows. The rental fee is \$320 per show plus the applicable fees. All agreed that this was too expensive. Rosemary Bennett was to forward contact information for Global to Lyse as it may be another alternative.

Item 5 – Newsletter

Kathy Hildebrandt asked for submissions.

Dawn Heinemeyer will submit information about her Ride to

Conquer Cancer

Item 6 – Member News

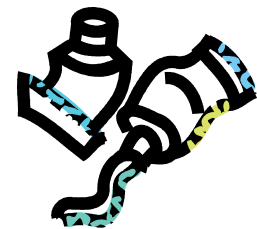
Linda Wilder is showing at Art Central for the month of March

Colleen O'Brien will be focusing on figurative work in March at her Art Central gallery.

Item 7 – Jean Geddes critique

Jean Geddes will critique members' works after the break

Meeting adjourned at 7:35



Just a reminder.....

To bring your own cup to the meetings. We are trying to do our part in going green by eliminating the use of disposable cups. Coffee and tea is available at the meeting but cups aren't!!



Workshop with Sharon Williams—March 7 & 8

Last chance to sign up!

This workshop is primarily about how to take your photo reference material and use it to make a personal statement about your reaction to it, rather than merely duplicating what you see.

We will learn how to take the elements that are meaningful to you and combine them in a composition that is pleasing, or demanding, or whatever it is that you want to accomplish by

making that artwork. This is perhaps a different way of working than you have experienced in the past, but hopefully it will be a door to experience what it means to make 'art' rather than reproduction. We will explore many tools to then apply to this framework to further personalize your vision, including value and colour usage. With all that planning, you will be able to paint your plan with joy and abandon.

It is great fun ultimately, it does require some hard work and searching, but the results will stay with you and will inform all you do in the future.

Contact Dawn Heinemeyer for more information



Member News/Opportunities/Notices

Upcoming Federation Gallery Shows

Abstract Show submission deadline: March 12

Visit the [Gallery's website](#) for more information.

Wild and Urban Impressions by **LINDA WILDER** resident artist for March TO A T studio gallery Art Central, 100-7ave SW lindawilderart.com, 403-262-6016 Tuesday-Saturday 11 -6pm opening reception March 5th 5-9pm

Dawn Heinemeyer is participating in "The Ride to Conquer Cancer" in June. It is a 200+km ride in the foothills to raise money for cancer research and treatment. She is looking for sponsors and donations. If

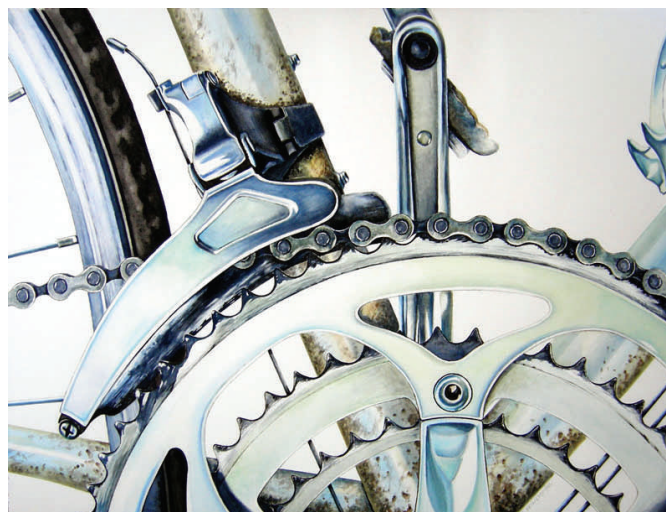
you would like to support her and cancer research go to

[http://www.conquer-cancer.ca/site/TR/Events/Alberta2009?](http://www.conquer-cancer.ca/site/TR/Events/Alberta2009?px=1800706&pg=personal&r_id=1282)

px=1800706&pg=personal&r_id=1282 She is also donating this painting to help raise money for this cause.

Do you have news you would like to share with our members. If so, please send the information to Kathy Hildebrandt at khilde@shaw.ca.

Articles must be received before the 25th of the month. They should have only a minimal amount of text formatting. Photos may also be submitted but their inclusion will be based on space availability. Only written articles please, do not submit show invitation jpg's.



Calgary Chapter Meetings are the Third Tuesday of Every Month

Haysboro Community Hall - 1204 - 89th Avenue S.W. (off Elbow Dr.) Phone (403) 253-1563.